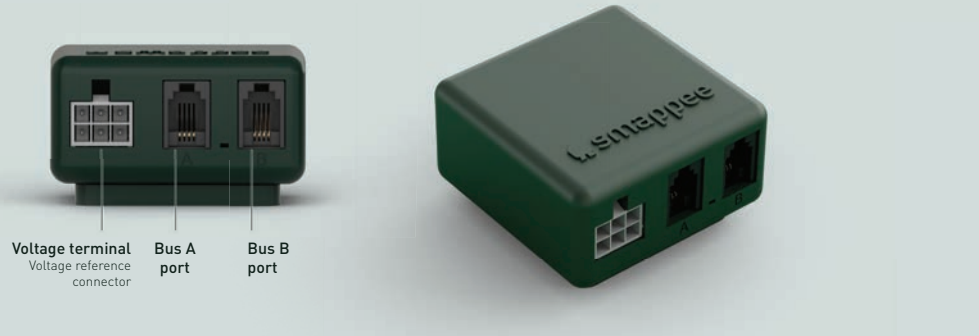


Smappee Power Box



- Works with almost any electricity network worldwide.
- Energy metering functionalities.
- You can measure up to 28 loads.
- Provides power to the entire system.

The Power Box is the compact and robust heart of the Smappee Infinity monitoring system. It's compatible with almost any electricity network worldwide and is DIN-rail mountable. It measures the line voltage of the connected phases, collects the currents from the CT sensors and calculates power, active energy, reactive energy and other energy and power quality data. It also provides power to all components.

ARTICLE NUMBER: I1-VAC-1 (I1-VAC-1-US FOR US)

Dimensions:

55 × 55 × 26.6 mm
(2.17 × 2.17 × 1.05 inches)

Weight: 44 g (1.55 oz)

Operating temperature:

-25 °C to 75 °C (-13 °F to 167 °F)

Storage temperature:

-25 °C to 90 °C (-13 °F to 194 °F)

Relative humidity:

0 % - 95 %, non-condensing

Operating altitude:

0 - 2,000 m (0 - 6,562 feet)

EMC: IEC 61326-1, FCC 47 part 15

Safety:

IEC 61010-1:2010/COR1:2011
Complies with UL 61010-1 and CAN/
CSA-C22.2 No. 61010-1-12
Impact rating (IEC 62262): IK 06 (Impact
Energy: 1J)

IP rating (IEC 60529): IP X0

Power supply input: 90 - 264 V AC

Power consumption: 8 W max

Voltage measurement inputs: L1, L2, L3, N

Topology and maximum nominal ranges:

- Single phase - 1~: 240 Vrms
- Split phase - 2~: 120/240 Vrms
- 3 phase (3 wires) - 3~: 240 Vrms
- 3 phase (4 wires) - 3~: 240/415 Vrms
- 3 phase (4 wires) - 3~: 277/480 Vrms

Frequency: 50/60 Hz

Intended environment conditions:

Pollution degree 2

Overvoltage conditions:

Overvoltage category II

Connectivity:

- Smappee Bus A
- Smappee Bus B

Accessories included:

- DIN mounting plate
- Power cable 90 cm open-ended (35.43 inches) or 180 cm open-ended (70.87 inches) in case of I1-VAC-1-US
- Bus termination plug